

# Syracuse University

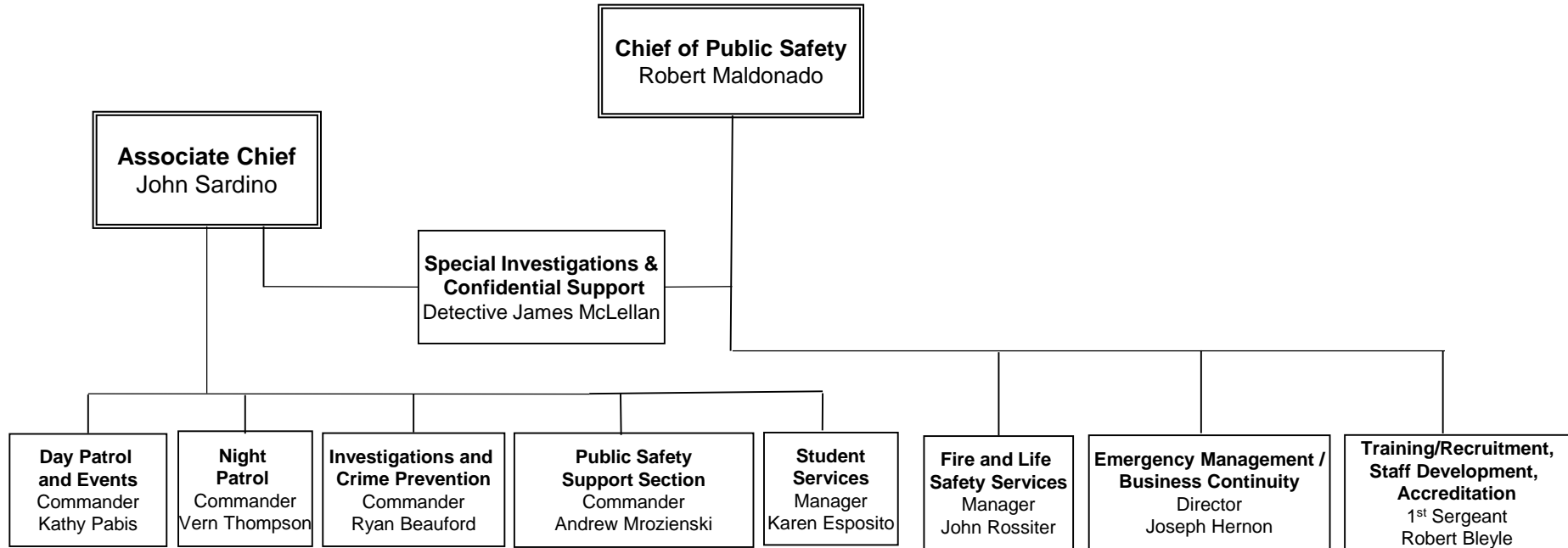
Department of Public Safety

## ORGANIZATIONAL CHART



March 21, 2017

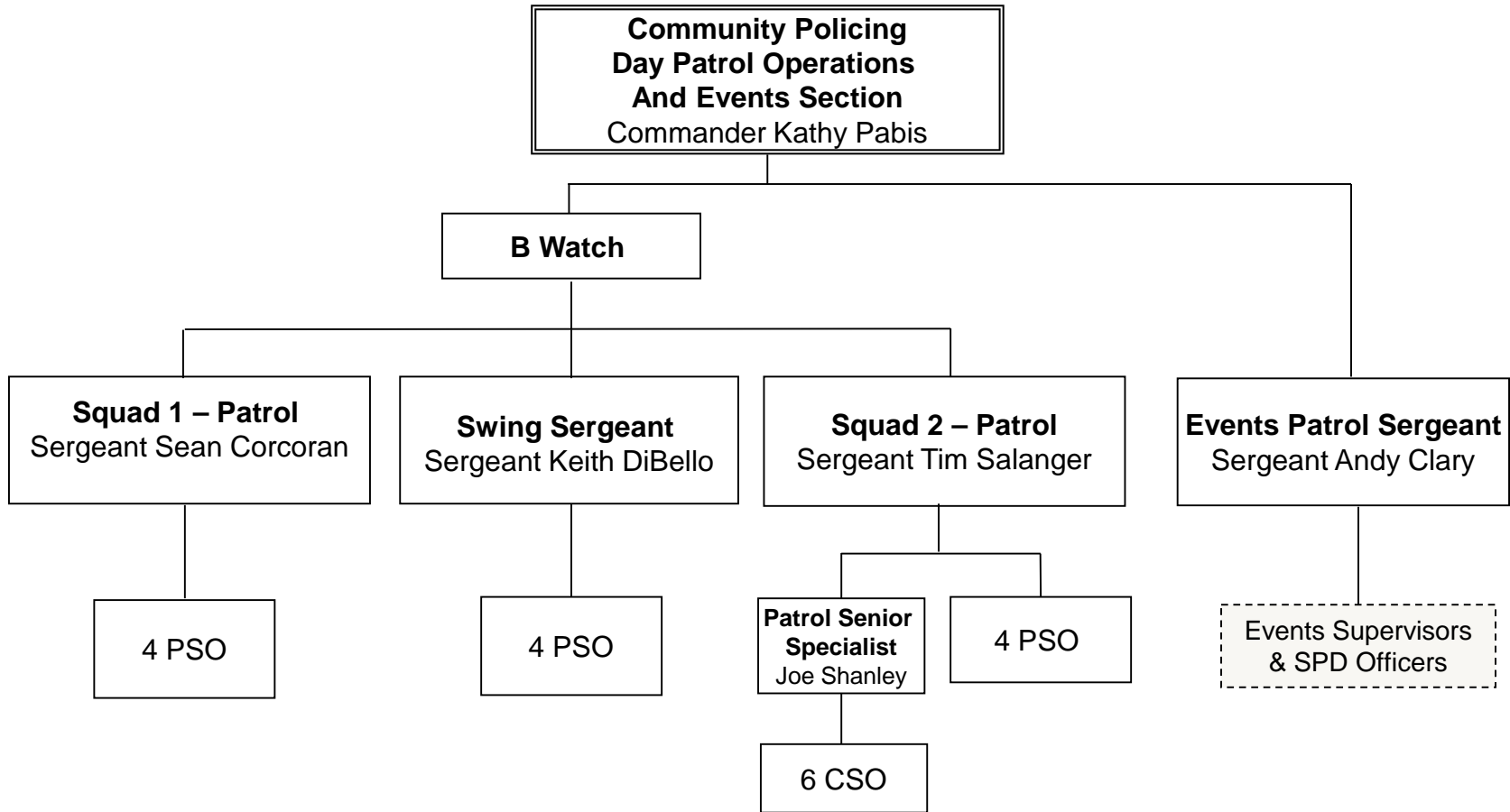
# Department of Public Safety



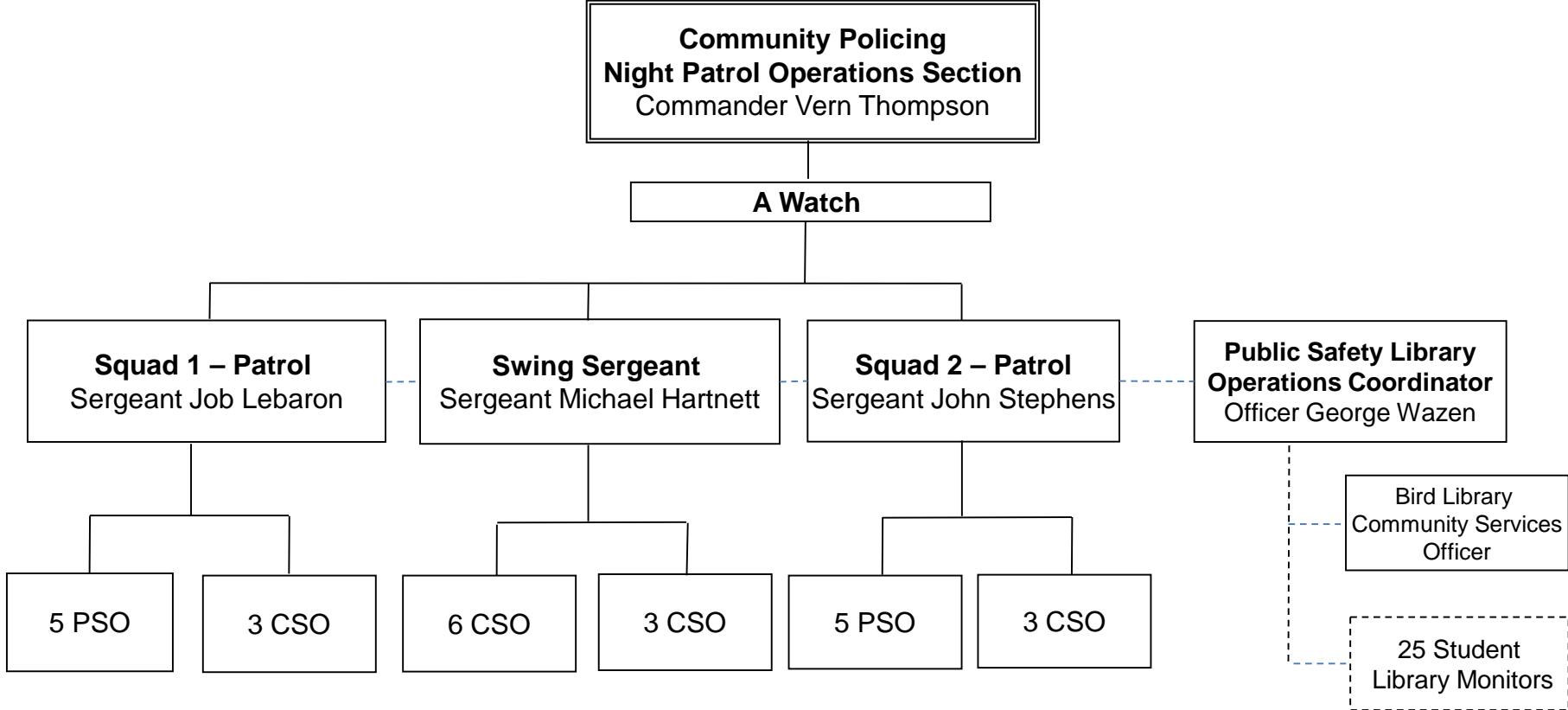
# Department of Public Safety

Law Enforcement and  
Community Policing Section

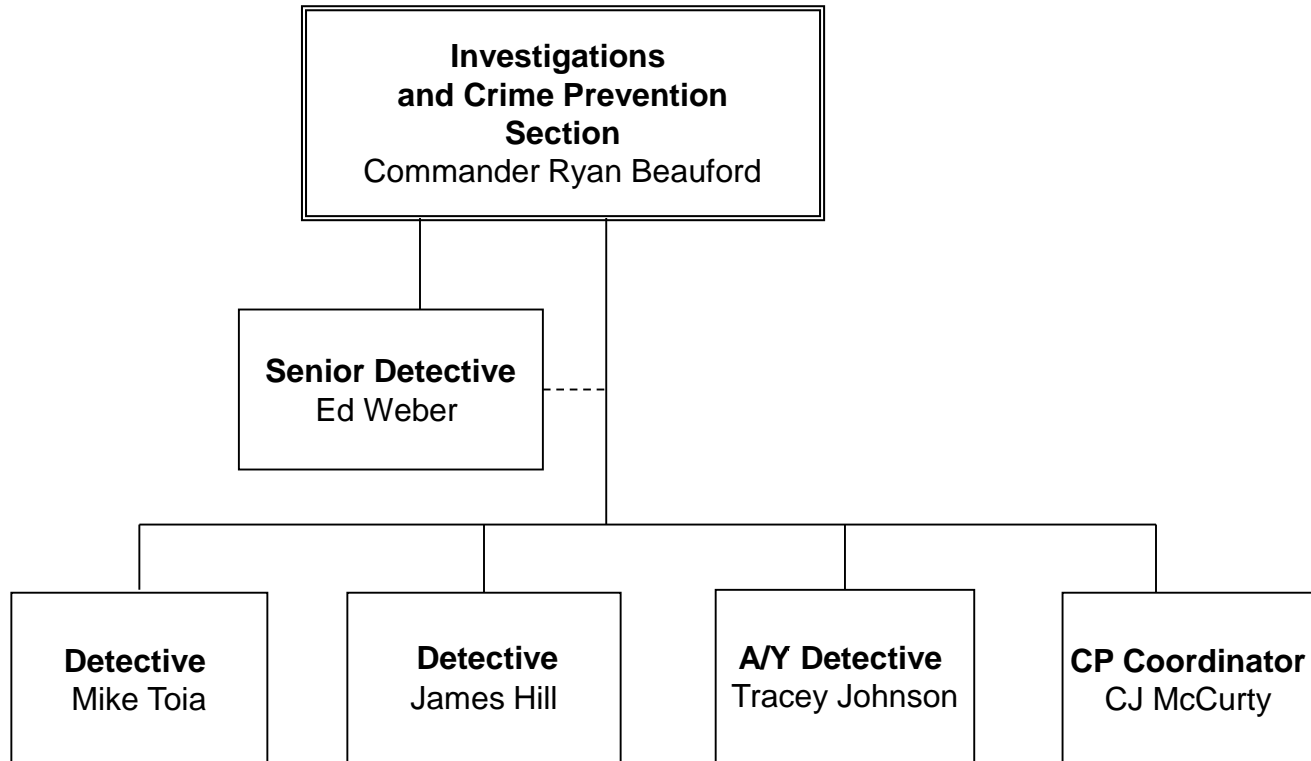
# Law Enforcement and Community Policing Section



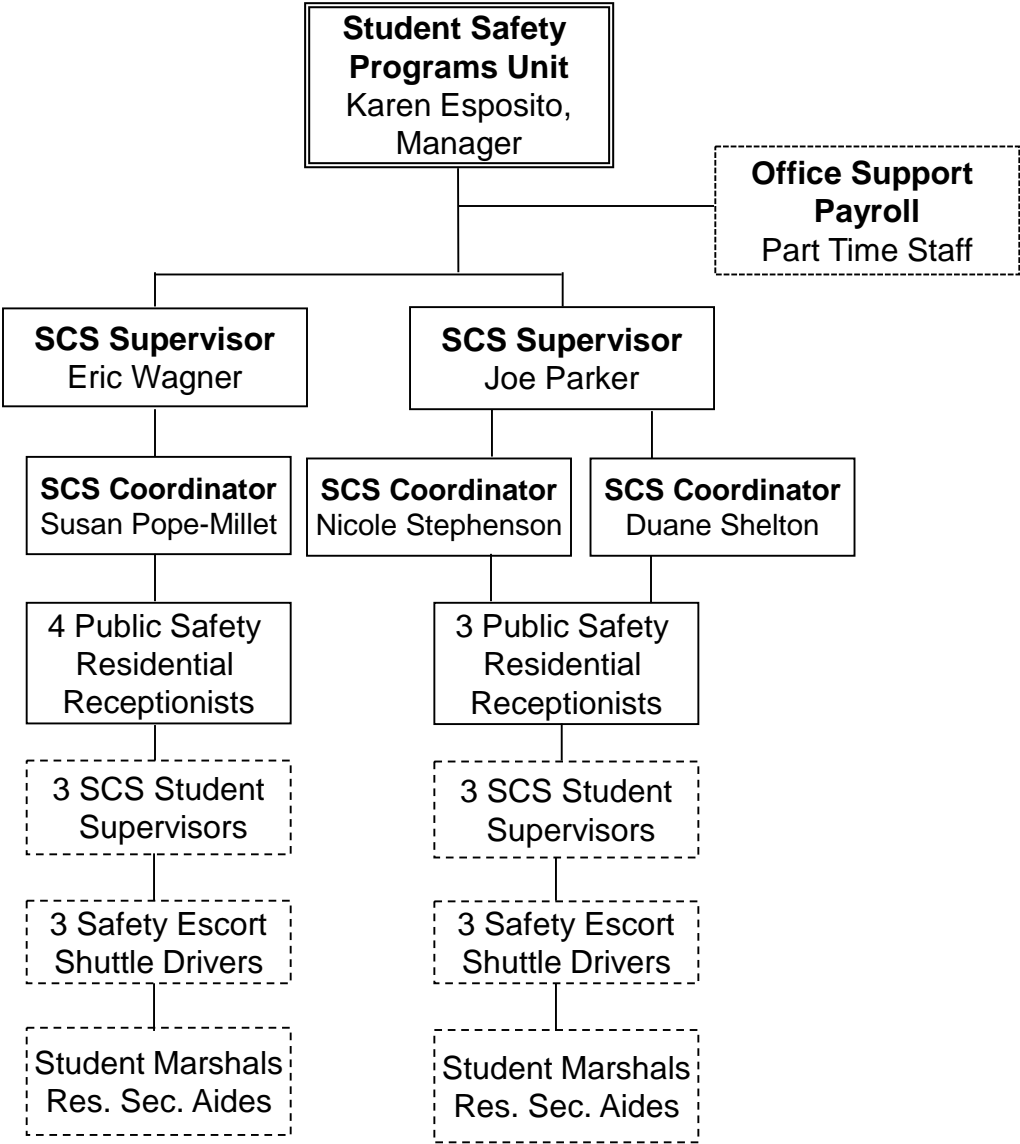
# Law Enforcement and Community Policing Section



# Law Enforcement and Community Policing Section



**Law Enforcement and  
Community Policing Section**



# Department of Public Safety

Public Safety Support Section



# Public Safety Support Section

**Operational Support /  
Inspections**  
Commander Andy Mrozienski

Security Projects

**Evidence Custodian**  
Officer Keith Schauer

**Records, Logistics  
and Property**  
Amy Francemone, Manager

Receptionist  
Academic Year  
Student Staff

**Sergeant, Public  
Safety Support**  
Sergeant  
Adam Wheeler

**Quarter Master**  
1<sup>st</sup> Sergeant  
Steve Karpinko

**PT Admin. Assistant**  
Anna Marie Schaap

**Courier**  
CSO Chris Hudson

Uniform Vendors

Car Dealerships &  
Vehicle  
Maintenance  
Contractors

Equipment  
Vendors

**Patrol Senior  
Specialist**  
Theresa Lostumbo

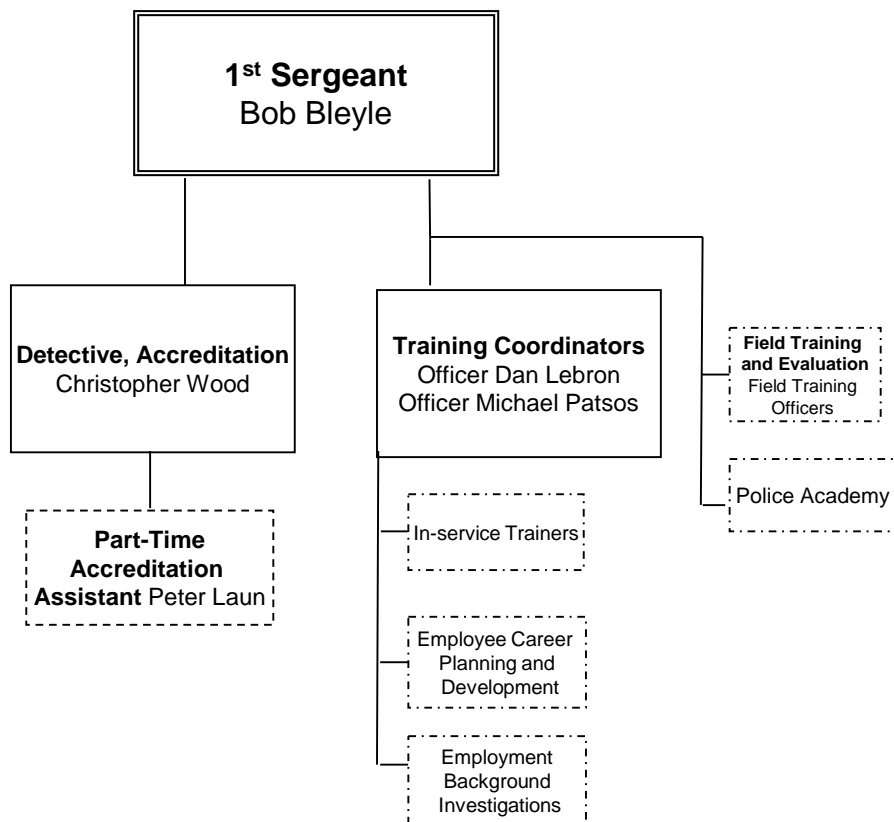
Community  
Services  
Officers

# Department of Public Safety

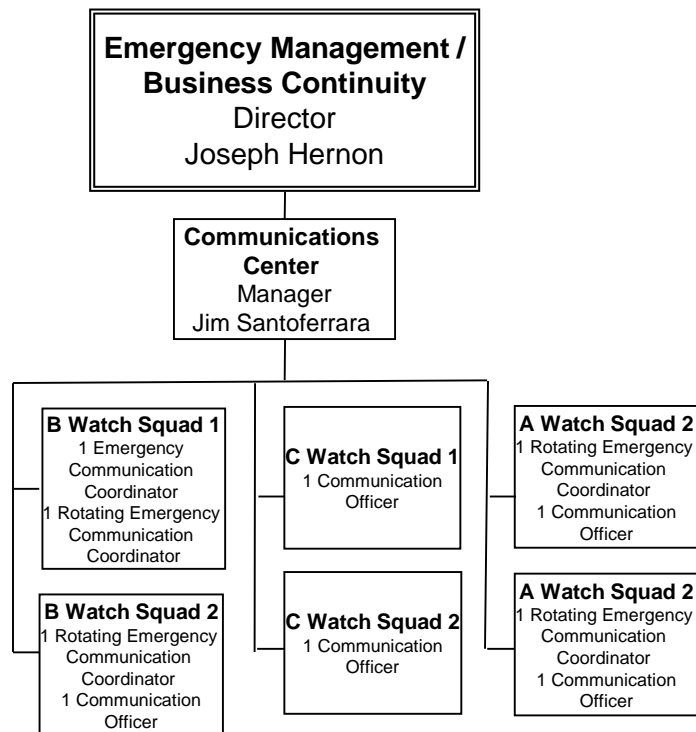
Emergency Management/Business  
Continuity

Training/Recruitment, Staff  
Development and Accreditation

## Training/Recruitment, Staff Development and Accreditation



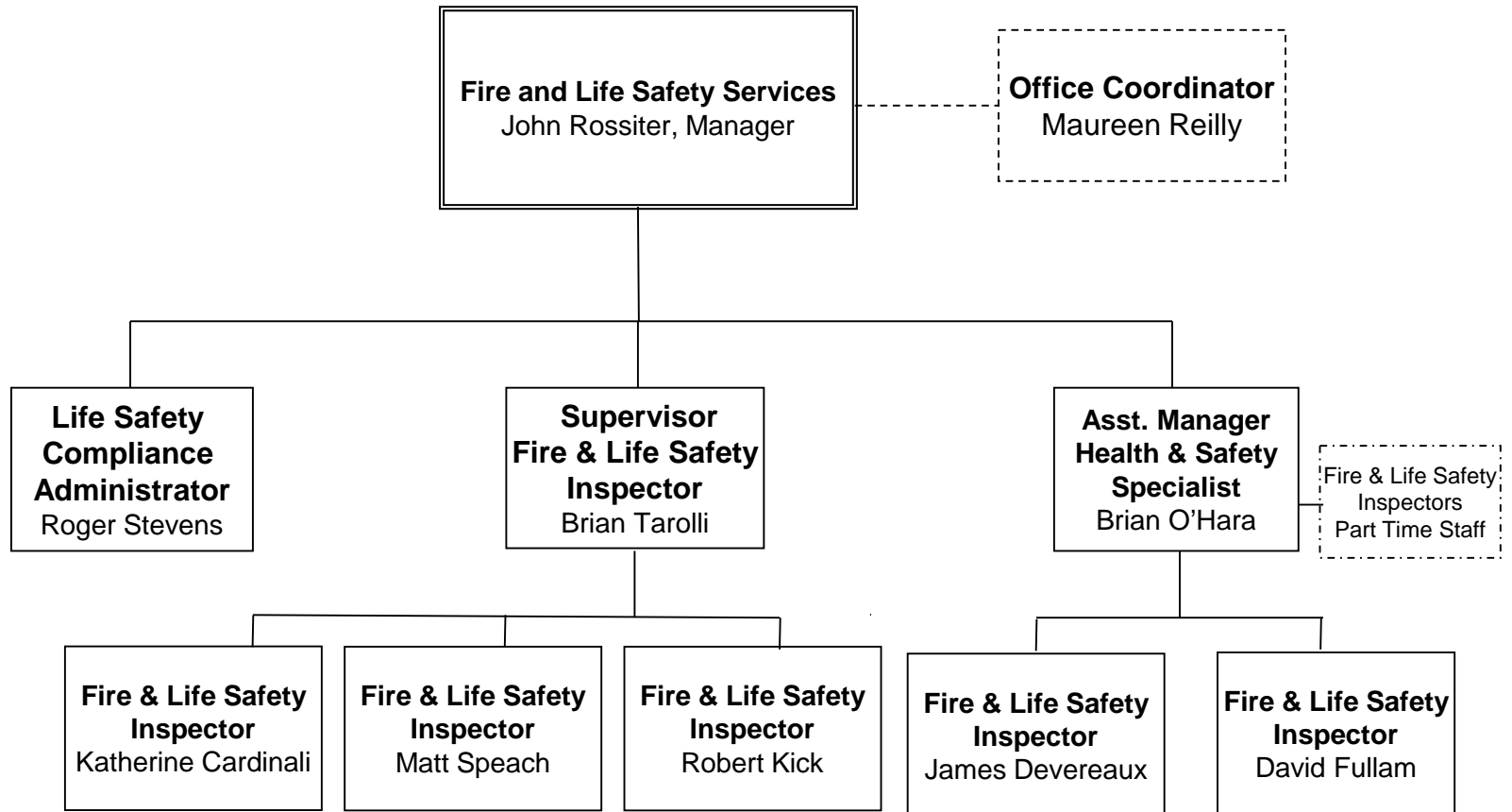
## Emergency Management/ Business Continuity Section





# Department of Public Safety

Fire and Life Safety Services  
Section

## Fire and Life Safety Services Section



# DPS Peace Officer Rank & Uniform Insignia

- Chief 
- Associate Chief 
- Commander 
- Senior Detective / Detective 
- 1<sup>st</sup> Sergeant / Sergeant 
- Non-designated ranking officer-Gold Badge
- Line Officer – Silver Badge